



1 KNOB AND RETAINING PAWL

Technopolymer, RAL 9005 black colour, matte finish.
Pawl width 7 mm, projecting part 4 mm.

2 UNLOCKING BUTTON

Technopolymer, light-grey colour.

3 ADJUSTING SPACER

Steel with corrosion resistant surface treatment in RAL 9005 black colour, matte finish.

4 THREADED BODY

Die-cast zinc alloy.

5 LOCKING NUT

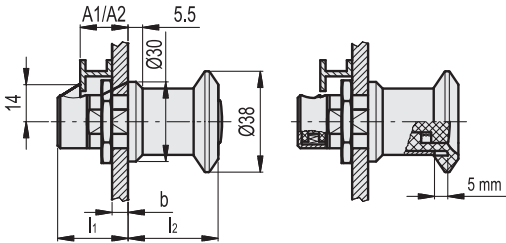
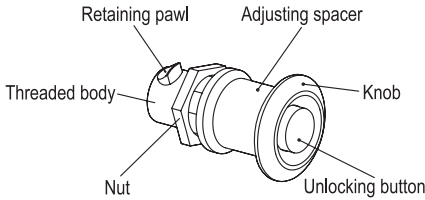
Zinc-plated steel.

6 FEATURES AND APPLICATIONS

GN 315 snap locks have a retaining pawl - activated radially by a spring - which allows locking.

By pushing the button, the pawl is withdrawn due the pressure exerted by the spring.

By adjusting the spacer, the pawl can be positioned at the right ledge distance hence allowing to lock the doors.



METRIC

Code	Description	A1/A2 (Adjusting distance)	b max Thickness of the door	l1	l2	△
GN.14481	GN 315-A1	18 ÷ 23	10.5 ÷ 15.5	26.5 ÷ 31.5	34 ÷ 29	130
GN.14482	GN 315-A2	23 ÷ 28	15.5 ÷ 20.5	31.5 ÷ 36.5	34 ÷ 29	140



1 KNOB AND RETAINING PAWL

Technopolymer, RAL 9005 black colour, matte finish.
Pawl width 7 mm, projecting part 4 mm.

2 UNLOCKING BUTTON

Technopolymer, light-grey colour.

3 THREADED BODY

Die-cast zinc alloy.

4 LOCKING NUT

Zinc-plated steel.

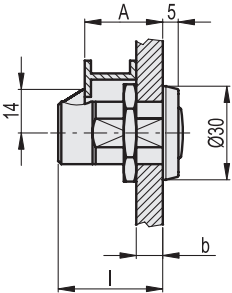
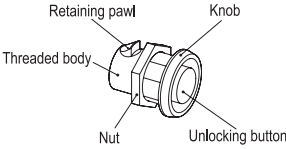
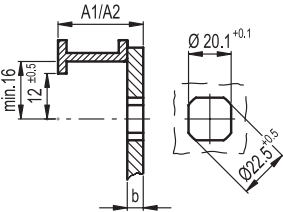
5 FEATURES AND APPLICATIONS

GN 315.1 snap locks have a retaining pawl - activated radially by a spring - which allows locking.

By pushing the button, the pawl is withdrawn due the pressure exerted by the spring.



Drilling template



METRIC

Code	Description	A	b	l	△
GN.14486	GN 315.1-20	20	12	28.5	60
GN.14487	GN 315.1-25	25	17	33.5	79